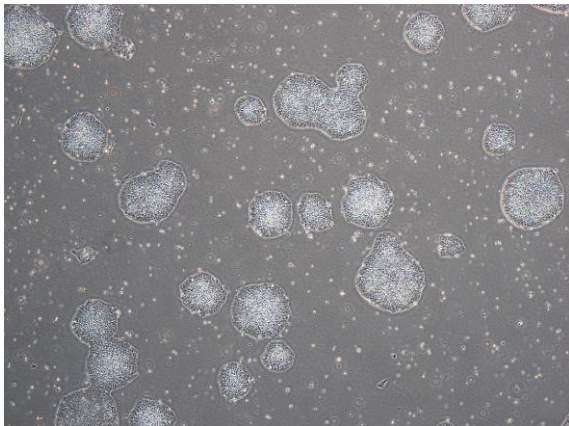
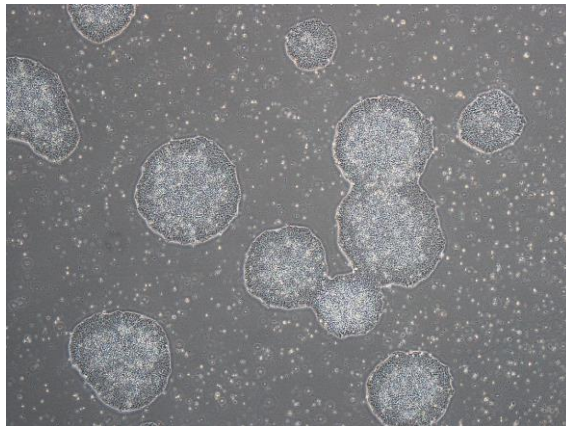


【 CiRA-j-1081 】 Morphology of iPSC colonies

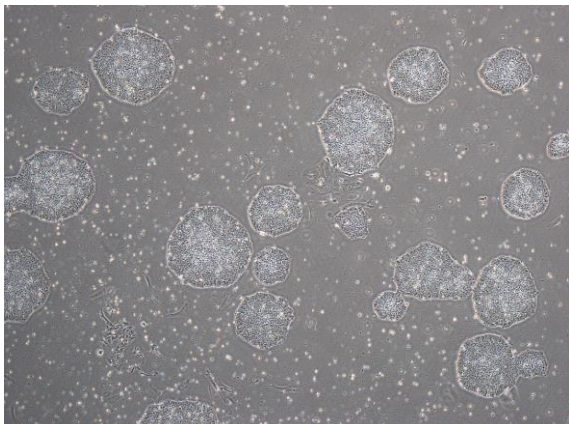
CiRA-j-1081-A: passage-2



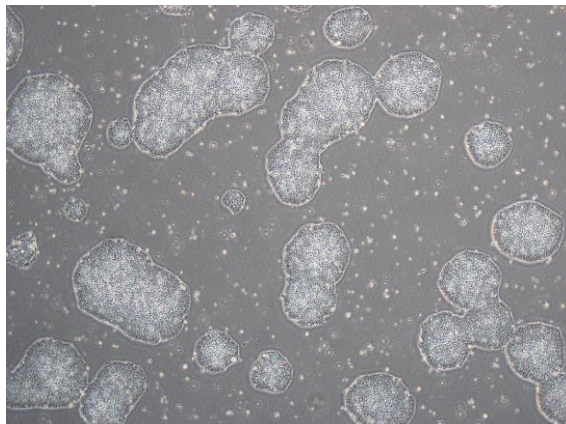
CiRA-j-1081-B: passage-2



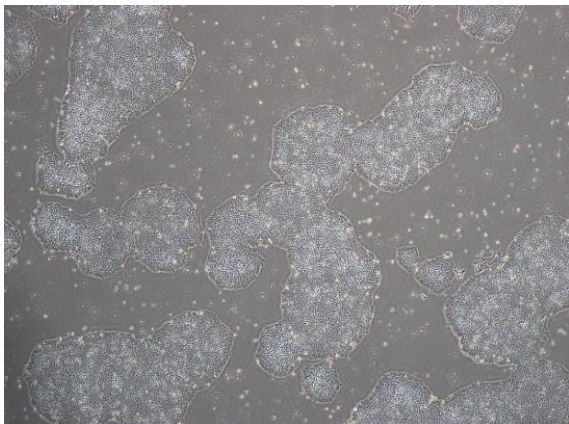
CiRA-j-1081-C: passage-2



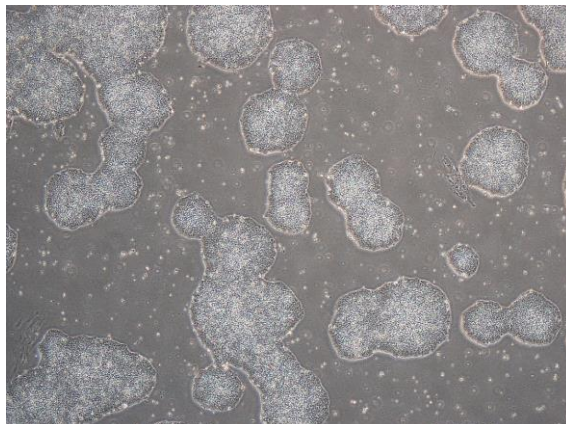
CiRA-j-1081-D: passage-2



CiRA-j-1081-E: passage-2



CiRA-j-1081-F: passage-2



(All images were captured at 4x magnification)